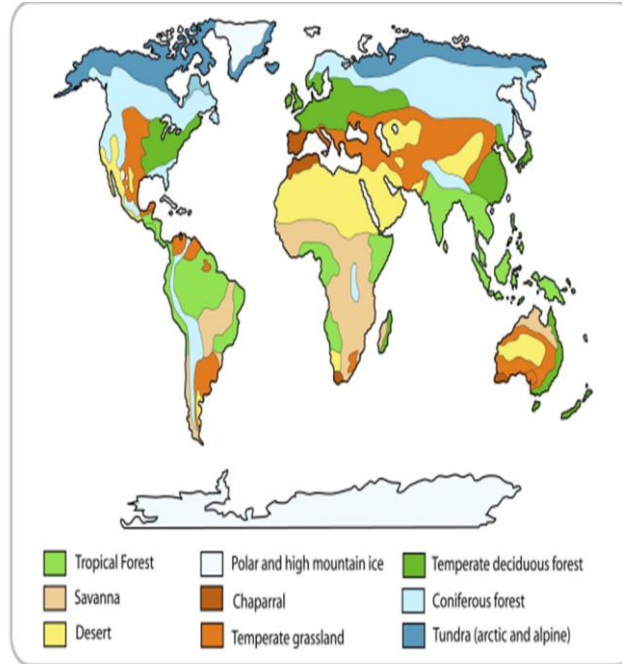


Climate and Weather

Key Vocabulary

biome	An area defined by its climate, plant and animal life. E.g. desert, forest, tundra and aquatic environments.
climate	Weather patterns in a place over a long period.
weather	Conditions in the atmosphere on a particular day.
drought	Period of little or no rain.
desert	An area with very little rain and extreme heat.
tundra	Land where the soil is froze all year. Trees cannot survive the low temperatures.

Climate Zones



Key Questions

What are weather climates and biomes?

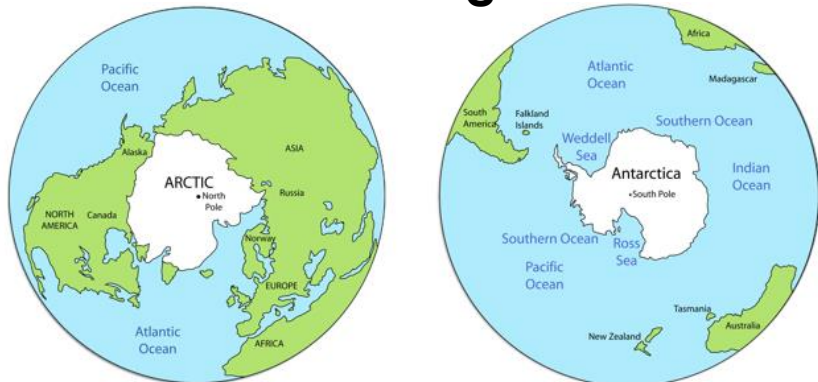
What are the polar regions like?

What are the hottest, driest places in the world?

Where are the hottest, wettest places in the world?

Which climate zone and biome do we live in?

Polar Regions



Why is climate important?

