

St. Joseph's School

Love, Learn, Grow



**Welcome to Upper
Key Stage 2**



Our School Prayer

St. Joseph's is our school.

Teach us Lord, to Love, Learn and Grow together

Just as you guided your beloved son, Jesus.

Open our hearts to your plans for us and

Show us your path to follow.

Each day, help us to feel your presence among us,

Protecting us on our journey.

Holy Spirit be with us.

St. Joseph pray for us.

Amen

Mrs O'Leary



Upper Key Stage 2 Phase Leader
Senior Teacher
(Leadership Team of School)
English Co-ordinator

Mrs Sheppard



Upper Key Stage 2 Phase Leader
Senior Teacher
(Leadership Team of School)
Science Co-ordinator

Term Dates 2024/2025

St Joseph's Catholic Primary School Term Dates 2024/25 Academic Year



Pupil Days

School holidays

Bank holidays

Inset Days

Transition Days



Sep-24						
Mon		2	9	16	23	30
Tue		3	10	17	24	
Wed		4	11	18	25	
Thu		5	12	19	26	
Fri		6	13	20	27	
Sat		7	14	21	28	
Sun	1	8	15	22	29	

Oct-24						
Mon			7	14	21	28
Tue		1	8	15	22	29
Wed		2	9	16	23	30
Thu		3	10	17	24	31
Fri		4	11	18	25	
Sat		5	12	19	26	
Sun		6	13	20	27	

Nov-24						
Mon		4	11	18	25	
Tue		5	12	19	26	
Wed		6	13	20	27	
Thu		7	14	21	28	
Fri	1	8	15	22	29	
Sat	2	9	16	23	30	
Sun	3	10	17	24		

Dec-24						
Mon		2	9	16	23	30
Tue		3	10	17	24	31
Wed		4	11	18	25	
Thu		5	12	19	26	
Fri		6	13	20	27	
Sat		7	14	21	28	
Sun	1	8	15	22	29	

Jan-25						
Mon		6	13	20	27	
Tue		7	14	21	28	
Wed	1	8	15	22	29	
Thu	2	9	16	23	30	
Fri	3	10	17	24	31	
Sat	4	11	18	25		
Sun	5	12	19	26		

Feb-25						
Mon		3	10	17	24	
Tue		4	11	18	25	
Wed		5	12	19	26	
Thu		6	13	20	27	
Fri		7	14	21	28	
Sat	1	8	15	22		
Sun	2	9	16	23		

Mar-25						
Mon		3	10	17	24	31
Tue		4	11	18	25	
Wed		5	12	19	26	
Thu		6	13	20	27	
Fri		7	14	21	28	
Sat	1	8	15	22	29	
Sun	2	9	16	23	30	

Apr-25						
Mon		7	14	21	28	
Tue	1	8	15	22	29	
Wed	2	9	16	23	30	
Thu	3	10	17	24		
Fri	4	11	18	25		
Sat	5	12	19	26		
Sun	6	13	20	27		

May-25						
Mon		5	12	19	26	
Tue		6	13	20	27	
Wed		7	14	21	28	
Thu	1	8	15	22	29	
Fri	2	9	16	23	30	
Sat	3	10	17	24	31	
Sun	4	11	18	25		

Jun-25						
Mon		2	9	16	23	30
Tue		3	10	17	24	
Wed		4	11	18	25	
Thu		5	12	19	26	
Fri		6	13	20	27	
Sat		7	14	21	28	
Sun	1	8	15	22	29	

Jul-25						
Mon		7	14	21	28	
Tue	1	8	15	22	29	
Wed	2	9	16	23	30	
Thu	3	10	17	24	31	
Fri	4	11	18	25		
Sat	5	12	19	26		
Sun	6	13	20	27		

Aug-25						
Mon		4	11	18	25	
Tue		5	12	19	26	
Wed		6	13	20	27	
Thu		7	14	21	28	
Fri	1	8	15	22	29	
Sat	2	9	16	23	30	
Sun	3	10	17	24	31	

Note: Wednesday 2nd October is a staff training day – pupils are not in school

Year 5 Teachers



Mrs Fallon



Mrs Davidson

Teaching Assistant

Mrs Banerjee

Year 6 Teachers



Mrs O'Leary



Mrs Sheppard



Mrs Thomson

Teaching Assistant

Mrs Bentley

ST JOSEPH'S CURRICULUM

INTENT - LOVE

To inspire in all pupils, regardless of ability and circumstances, a love of learning, a thirst for knowledge and understanding about God, ourselves and our world.

IMPLEMENTATION - LEARN

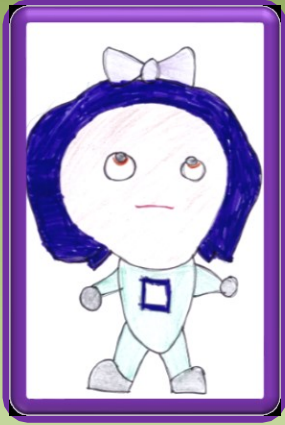
Ensuring a broad, balanced and engaging curriculum that is accessible to all learners.

IMPACT - GROW

Regardless of starting points, all pupils leave each key stage ready to continue their education journey and make a difference in the world.

See website for full curriculum overviews

Our Learning Characteristics



Bounce-back Beth

Reflective Rose

Independent Ian

Teamwork Tim

Curious Chris

Motivated Millie

Curriculum Year 5



See website for full curriculum overviews

Advent 1

M	Wk	Tk	Y	H	D	100	1000
0	0	0	0	0	0	0	0
Thousands	Hundreds	Tens	Units	Tens	Units	Tens	Units

Adding and **Subtracting**

Place value, addition and subtraction



Los Instrumentos



Playing the Djembe

HS2
CROSSES
HERE



www.stophs2.org

Writing persuasive arguments and poems



Local area



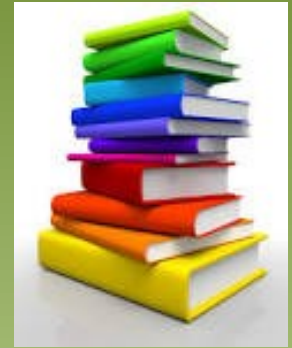
Local area art



Butterfly
Life Cycle

Life Cycles

Curriculum Year 6



See website for full curriculum overviews

Advent 1

Place Value and the Four Operations

5,734.912

thousands tens decimal point hundredths

hundreds ones tenths thousandths

— + ÷ ×

Key Scientists

Internet Communication

African Drumming

At the café
En la cafetería

Non-chronological Report and Poetry

Ancient Greece

so YOU THINK YOU'VE GOT IT BAD?
A REAL LIFE IN ANCIENT GREECE

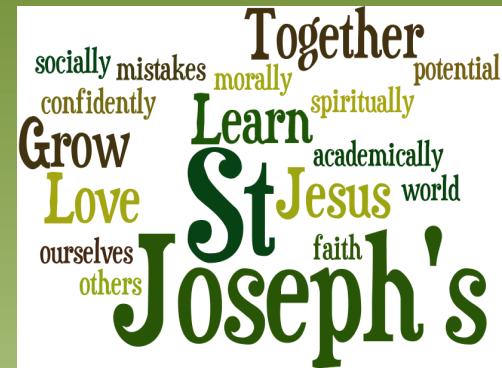
MYTHOLOGICA

A typical week...

- Writing and Maths daily
- Reading lessons
- SPAG (spelling / grammar)
- Humanities (History/Geography)
- RE x 2 per week
- Assemblies -whole school Monday, Celebration on Friday and Phase Assembly or Open the Book on Thursday
- Music, computing, Spanish, PE x 1 per week (additional Sports afternoons)
- PSHE Day each half term
- Art/D&T week each half term



Expectations



For a safe and happy school, we are expected to:

Arrive at school on time.

Take pride in our school building.

Wear our school uniform with pride.

Look after our belongings.

Be truthful, well-mannered and kind.

Act responsibly and set a good example for others.

Take responsibility for our actions in school, on trips and online.

Keep our school litter free.

Exercise self-control.

HOMESWORK



ENGLISH



SET: MONDAY
DUE: WEDNESDAY

MATHS

WIDER CURRICULUM

SET: WEDNESDAY
DUE: FRIDAY

SET: THURSDAY
DUE: MONDAY



AcceleratedTM
Reader

Key Dates

Year 5 Dates	Events
17/10 14/11 16/12 21/01 13/02 TBC 20/06	5D's class assembly 5F's class assembly End of term Mass in the church Virtual Headset Experience Year group assembly Visit to Neasden Temple Sports Day
Year 6 Dates	Events
10/10 16/01 21/01 07/02 07/03 12/05 04/06-06/06 20/06 15 and 16/07 23/07	60's class assembly 6ST's class assembly Virtual Head set Experience 60 attend Mass at church 6ST attend Mass at church SATS week starts PGL Sports Day Production Leavers Mass

Sports Afternoons

Year 5

08/11, 06/03, 16/05

Year 6

14/11, 13/02

Year 6 Games Festival 02/07

Forest School Dates

5D	5F	6O	6ST
7th, 14th, 21st , 28th November	5th, 12th, 19th, 26th November	1st, 8th, 15th October	3 rd , 10 th 17 th October
15 th , 22 nd May	13th, 20th May	6 th , 13 th March	4 th , 11 th March
5 th , 12 th , 19 th June	3rd, 10th, 17th June		

Key information about Forest School:

Waterproofs

Wellies

Warm clothes (hats, gloves, scarf)

Spare named bag (for muddy clothes)

Stationery

- 2 pencils
- Pencil sharpener
- 30cm ruler
- Blue handwriting pen (not biro)
- Purple pen
- Whiteboard pen
- Pritt Stick
- Eraser
- Pack of coloured pencils
- Small scissors

All items to be clearly labelled

Pencil cases should be small enough to fit inside their tray (no Smiggle pencil cases please).



Come in We're
OPEN

Stationery Shop is open
every morning
Key Stage 1 Hall Door

WRITING PENCIL: 60p

HANDWRITING PEN: £1

30CM RULER: 50p

PURPLE PEN: 80p

ERASER: 50p

BASIC SHARPENER: 30p

**SHARPENER WITH CONTAINER FOR
SHARPENINGS: 70p**

GLUE STICK (Pritt): £1.50

DRY WIPE MARKER: 70p

End of day procedures

- Contact details regularly updated via the school office
- Children will only be released to those over the age of 16 – a password will still be required
- Children in Year 5-6 who parents wish them to independently leave the school site must put this in writing (letter / email).
- Behaviour expectations.

Key Information

- Label school uniform and PE kits (including bags).
- Appropriate clothing for the season (coat, sunhat etc.)
- Children in KS2 can bring **fruit/veg** for a break time snack. This should be in their school bag not in their lunchbox.
- Water bottle (reusable / **no juice**).

Working Together

- Uniform
- Reading daily- encourage accelerated reader quizzes
- Providing PE kit (Y5 Tuesday / Y6 Wednesday)
- Homework support
- Independence

Parent Drop in evening

Year 5

Year 6

Tuesday 3.30-4.00pm

Thursday 3.30-4.00pm

You do not need to book
Come in off the playground
Chance to catch up with the teacher
Look at books
Keep teacher informed about things
Raise a concern

Uniform

Reception – Year 6

Item

Winter

Dark green V-necked jumper **with school crest**
Dark green tie with thin gold double stripe
White cotton shirt
Dark grey full-length school trousers / Dark grey pleated, full or A-line knee-length skirt or pinafore
Dark grey or white knee/ankle socks or tights (no branded logos)
Black shoes (no branded logos)

Summer

Dark grey knee length school shorts / Dark grey full-length school trousers / Dark grey pleated, full or A-line knee-length skirt or pinafore
White cotton shirt (worn with school tie)
School tie (if wearing a cotton shirt)
White polo shirt **with or without school crest** (worn without school tie)
Dark green and white full gingham **dress**
Dark grey or white knee / ankle socks or tights (no branded logos)
Dark Green Baseball cap / Kepi cap **with or without school crest**
Black shoes (no branded logos)

Outdoor Wear

Black / navy coat (plain – no branded logos)
Dark green shower-proof jacket or fleece with school crest

PE and Games

Dark green gym bag **with school crest**
Black (plain – no branded logos) loose fitting shorts
Green T-shirt **with gold school crest**
Black (plain – no branded logos) tracksuit bottoms
Black (plain – no branded logos) sweatshirt
Trainers (suitable for sporting activity)

School bag

Dark green book bag **with school crest** (Infants)
Dark green rucksack (small or large) **with school crest** (Juniors)

Jewellery

On health and safety grounds, we do not allow children to wear jewellery in our school. The exceptions to this rule are plain ear studs in pierced ears, or a watch when your child is able to tell the time.

Uniform

Hair

On health and safety grounds, shoulder length hair and longer should be tied back neatly, in the school colours (white, dark green or black only). Large hair rosettes and bows are not to be worn. Pupils should not wear extreme hair fashions, these include dyed or streaked hair, close shaved hair (**even under top layer of longer hair - undercut**) and styles such as spikes, tufts, high tops, flat tops, Mohican haircuts and images or lines cut into the hair.

Children's hair length should be no shorter than a number two.

The use of hair gels, waxes, oils, mousses and any other styling products is not allowed.

If we feel a hairstyle is unsuitable, we will ask for this to be rectified.

Make up / Nails

Make up is not permitted.

Nails are to be kept short and nail varnish is not permitted.

Uniform shop will be open Wednesday and Thursday afternoon at pick up time 3.30pm

Supporting Your Child

- Read to your child as well as them reading to you
- Times tables and number facts
- Use knowledge organisers for regular quizzing
- Quizzing on Accelerated Reader
- The school website has links to additional educational sites and materials that you may wish to access
- Teach them to be independent!

QUESTIONS

A word cloud on a white background with a green border. The words are in various sizes and colors (green, brown, yellow-green). The largest words are 'Together', 'Learn', 'St. Joseph's', 'Grow', and 'Love'. Other words include 'socially', 'mistakes', 'morally', 'potential', 'confidently', 'spiritually', 'academically', 'world', 'faith', 'ourselves', and 'others'.

socially mistakes morally potential
confidently **Together** spiritually
Grow **Learn** academically
Love **St. Joseph's** world
ourselves faith
others

Communication with school

Class teacher

EYFS Leader
Mrs Pugsley

Phonics Leader
Mrs Barugh

**Years 1-2
Leader**
Mrs Davies

**Year 3-4
Leader**
Mrs Barugh /
Mrs Fallon

**Years 5-6
Leader**
Mrs O'Leary
Mrs Sheppard

Assistant Headteacher
Mrs Ford (SENCo/Inclusion /
Safeguarding)

Deputy Headteacher
Mrs O'Kane (Curriculum and
Assessment / Behaviour)

**Mrs Lovegrove
Headteacher**

We Love, Learn and Grow together by following the example of Jesus

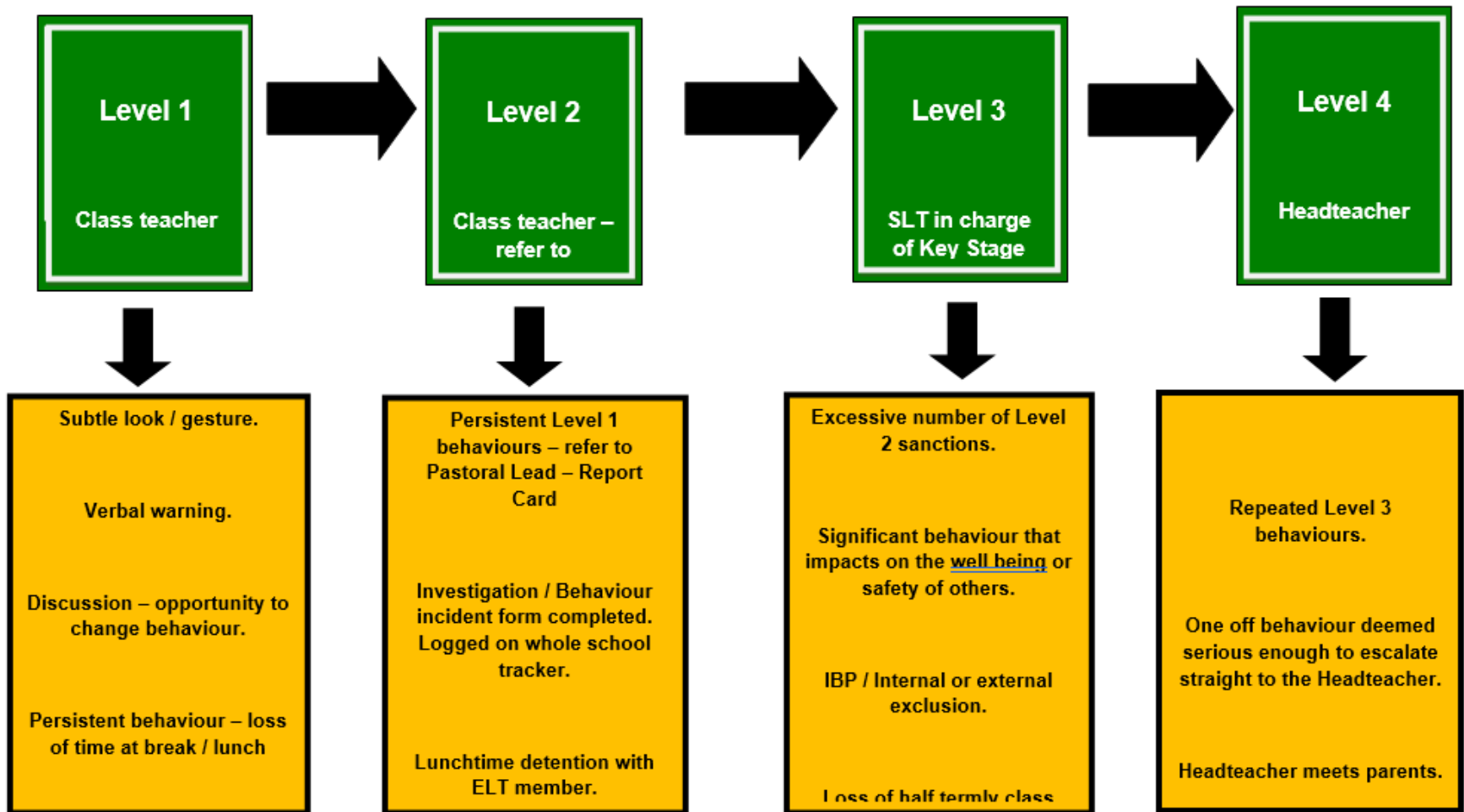
This means being:

Respectful to everyone
Showing good manners
Speaking politely
Acting with kindness



socially mistakes morally spiritually potential
confidently Learn academically world
Grow Love St Jesus faith
ourselves others Joseph's

GRADUATED RESPONSE TO DEALING WITH BEHAVIOUR



Please see our full Positive Behaviour Policy – on the school website

Raise Your Child's Attendance,
-Raise their Chances!

High attendance encourages the
widest possible opportunities for
YOUR child.

What does

“Good attendance”

mean?

The Impact of Non- attendance

- 95% - 9 days, 50 lessons lost
- ▶ 90% - 19 days, 100 lessons lost
- ▶ 85% - 29 days, 150 lessons lost
- ▶ 80% - 38 days, 200 lessons lost

We do understand that 100% is not always possible due to a child being unwell

Nevertheless, FULL ATTENDANCE should always be the AIM

School Hours

8:30am –

School gates open, all pupils welcomed.

KS2 – go onto the playground and enter school as a group 8.45am

Pupils that arrive at this time, have the opportunity to talk to their peers.

8:45am –

The school gates are closed. The whistle is blown and pupils line up and go into class where the register and lunch order is taken. **The school day has officially started.**

8:55am -

Registers are officially closed and sent to Attendance Officer. Any pupils arriving after this time are recorded as late on the register. Pupils with 10 late codes will be invited to a meeting to discuss poor punctuality.

9am -

Pupils arriving after 9am will be coded as U, this will be recorded as absent and will affect attendance figure.

3.30pm -

School day finishes and all pupils are expected to be collected on time or prior arrangements made by parents to use the wrap around provisions provided by Busy Living.

Appointments during school time

- ▶ Taking your child out of school for medical/dental appointments disrupts their learning, along with the learning of rest of the class
- ▶ Appointments must be booked **outside** of the school day or **during the holiday period**
- ▶ **Documentation must be produced**, in advance, for any appointments that you wish your child to attend during the school day

Holidays and exceptional circumstance leave

- ▶ No holidays during term time are allowed, any term time holidays will be recorded as **unauthorised** and escalated to Buckinghamshire County Council attendance team, where parents will enter an attendance contract and penalty fines will be given, direct from the council

(contracts and fines are not limited to term time holidays, also to persistent absence and persistent lateness).

- ▶ All holidays need to be taken during the school holidays.
- ▶ If any leave is required during term time, due to special circumstance, speak with the attendance officer and we can discuss further, supporting documents will be required.

Rewards

Weekly Draw

- We reward those pupils who do achieve 100% attendance on a weekly basis, with the winner of the draw receiving a goodie bag each Friday.

Grand Prize

- Our grand prize draw raffle of a £50 Amazon voucher will also reward those pupils who have full attendance each week during the term.

Both these draws are celebrated during assemblies, with the whole school present.

Information

- Attendance Policy is available to view on our website, along with an attendance chart, which outlines the procedures, so that everyone is clear of the process with regards to attendance
- 01753 887743 / absence@stjosephschalfont.school

Contact before 8:30am if your child cannot attend school, giving the reason. **You must contact the school each day your child is absent.**

All attendance related queries can be directed straight to the Attendance Officer, preferably after 10am, Monday-Friday.

Dietary & Medical Needs

- Inform us immediately of any changes to dietary or medical needs
- If we are required to keep medication onsite permanently you will need to complete:
 - ❖ Healthcare plan and an agreement for administering medication
- If we are required to keep medication onsite, short term, for example antibiotics, you will need to complete:
 - ❖ Agreement for administering medication

All medication must be brought to the school office by an adult, no pupil is expected to carry any type of medication in their bag

All medication must be prescribed, in the original packaging and age related



SAFEGUARDING

Takes precedence over everything else in school.

Mrs Ford (Assistant Headteacher) Safeguarding Lead for the school.

Mrs O’Kane (Deputy Headteacher) Deputy Safeguarding Lead for the school.

Mrs Lovegrove (Headteacher) has overall responsibility for Safeguarding.

If you have any safeguarding concerns please bring them to the attention of one of the members of staff listed above.

Check your emails / texts regularly – this is the main means of communication from school.

Check weekly school reminders– emailed on Friday.

Check school website, facebook and twitter account.

Website: www.stjosephschalfont.school

Twitter: @StJosephsCSP

Facebook: St Joseph's Chalfont St Peter

Parent Drop in session

3.30-4.00

Please make every effort to attend assemblies, Masses and key parent workshops on curriculum areas to remain informed and support us and your child.

Parking around School

Acceptable behaviour

Thank you for coming
and for your
continuing support.

A word cloud graphic with a white background and a green border. The words are arranged in a cluster, with 'St. Joseph's' being the largest and most prominent. Other words include 'Together', 'Learn', 'Grow', 'Love', 'socially', 'mistakes', 'morally', 'potential', 'confidently', 'spiritually', 'academically', 'world', 'faith', 'ourselves', and 'others'. The colors of the words range from dark green to light yellow-green.

socially mistakes morally potential
confidently **Together** spiritually
Grow **Learn** academically
Love **St. Joseph's** world
ourselves faith
others