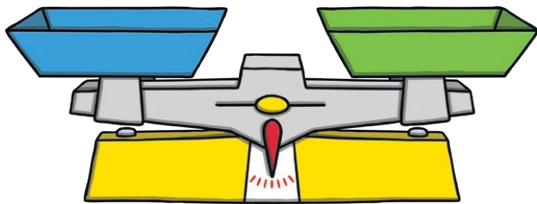
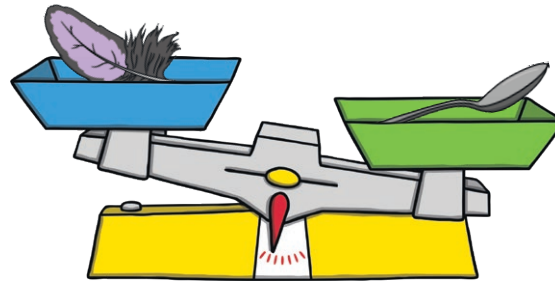


Balance scales can help us compare and measure mass.

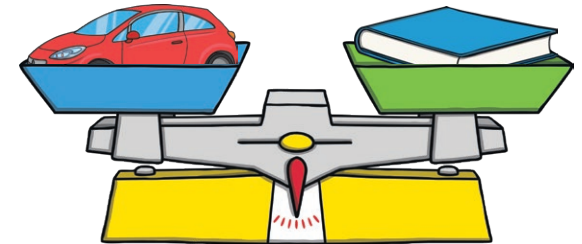


Compare Mass

The feather is **lighter** than the spoon.
The spoon is **heavier** than the feather.

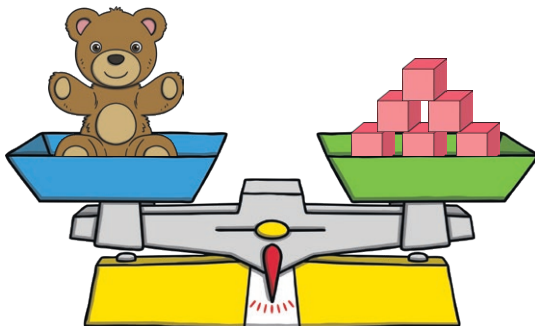


The toy car and book have **the same** mass.
They have an **equal** mass.

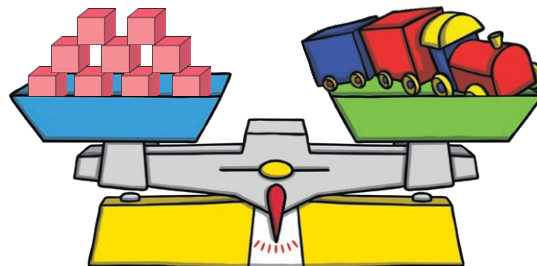


Measure Mass

The teddy has a mass of 6 cubes.

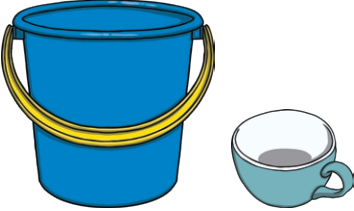
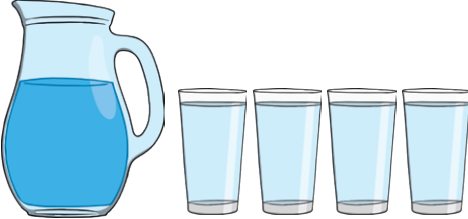



The toy train has a mass of 9 cubes.

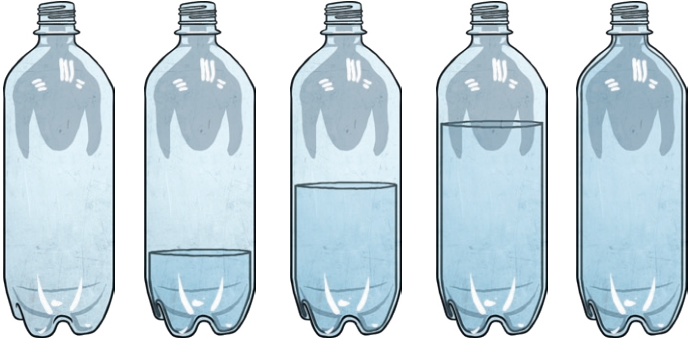
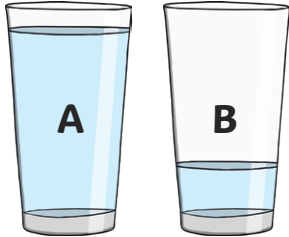


The toy train is **heavier** than the teddy.
The teddy is **lighter** than the toy train.

Capacity is the total amount that a container can hold.

Capacity	Measure Capacity	Compare Capacity
<p>The bucket has a greater capacity than the cup. The cup has a smaller capacity than the bucket.</p> 	<p>The full jug of water filled 4 glasses.</p> 	<p>The cup has a capacity of 5 spoonfuls. The bowl has a capacity of 10 spoonfuls.</p>  <p>The bowl has a greater capacity than the cup. The cup has a smaller capacity than the bowl.</p>

Volume is the amount that a container is holding.

Measure Volume	Compare volume	
<p>empty nearly empty half full nearly full full</p> 	<p>Glass A is holding a greater volume of water than glass B.</p> <p>Glass B is holding a smaller volume of water than glass A.</p> 	<p>The jugs are ordered from the smallest to the greatest volume.</p> 